

# Forms of County Government

As Described by the Optional County  
Government Law and the Alternative  
County Government Law

# Legislative Branch

## General Powers

- Exercises all powers of local legislation
- Creates and organizes administrative units
- Adopts the annual budget
- Makes appropriations, levies taxes, and incurs indebtedness
- Sets salaries of county officers and employees
- May investigate conduct and affairs of any county officer or office

# Executive Branch

## General Powers

- Administrative head of county government
- Prepares, submits, and executes annual budget
- Executes and enforces all resolutions, orders, and laws pertaining to the administration of the county
- Appoints all department heads, officers, and employees of the administration
- Provides legislature with an annual report regarding the activities and financial condition of the county
- Regularly examines the books and papers of every department and performs an audit when necessary

# County President Form

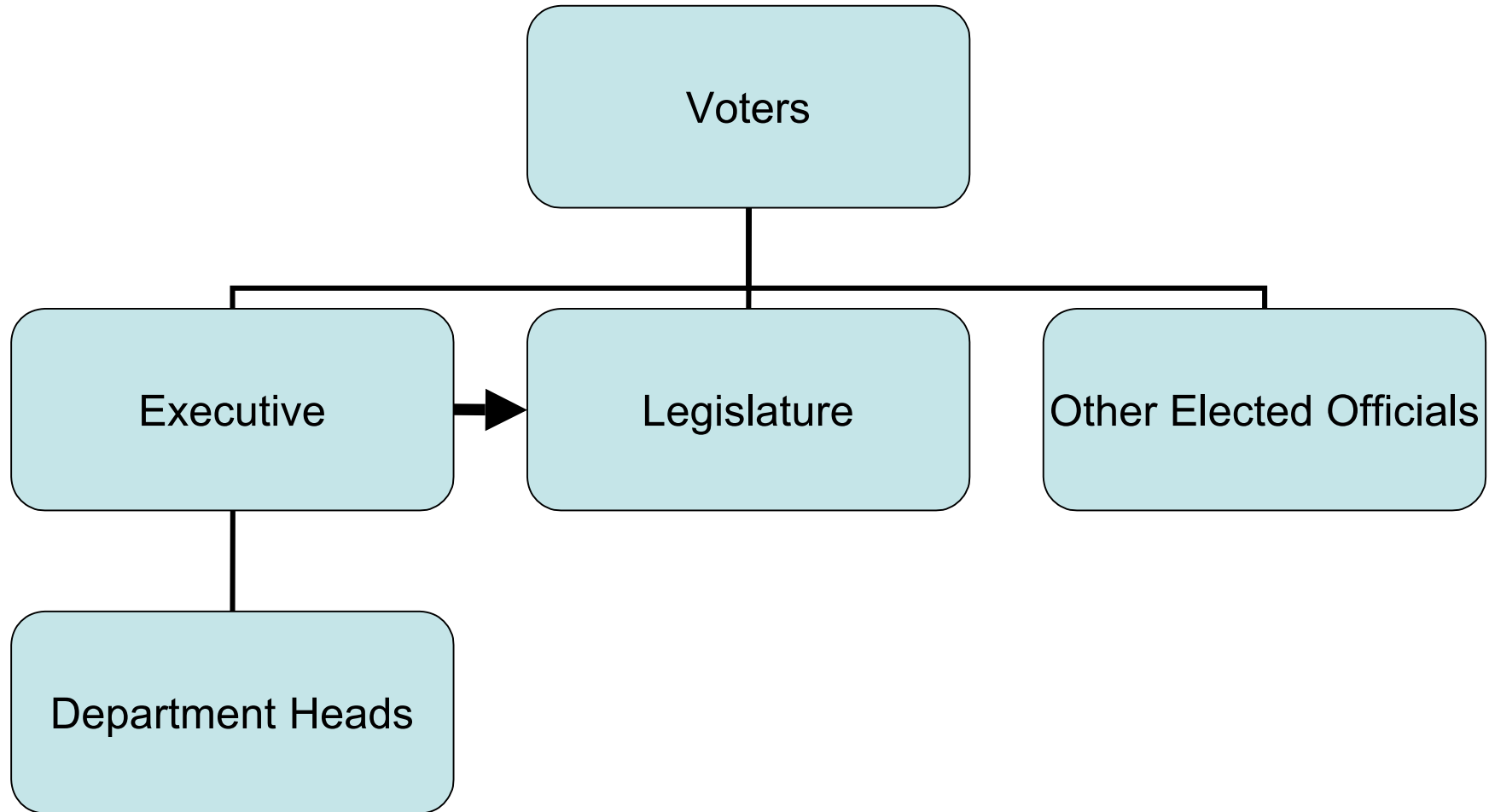
## Strong

- Elected county wide to a four year term
- Has veto power subject to a two thirds override
- Also serves as Chairman of the Legislature
- Appointments are made without confirmation

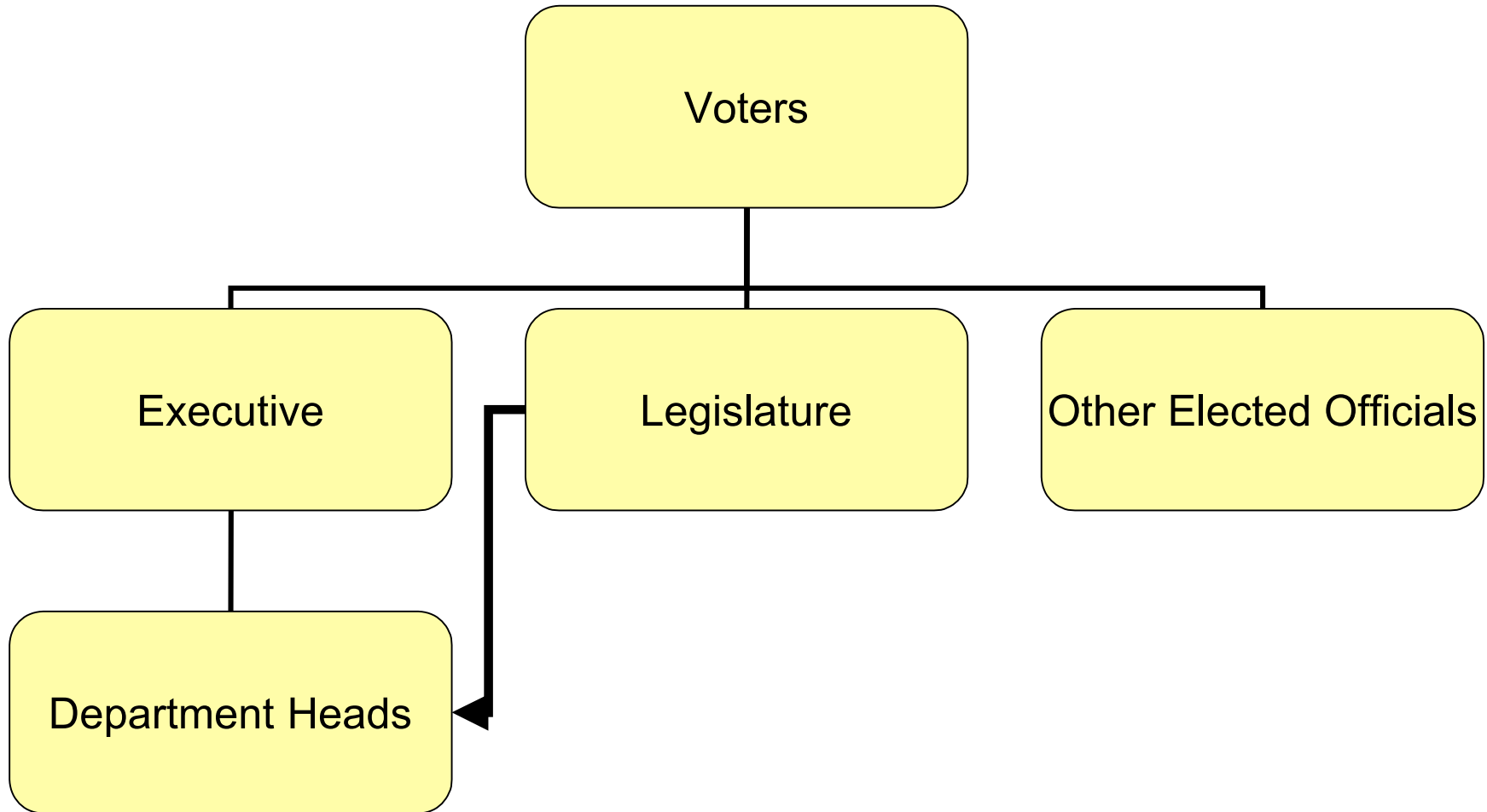
## Weak

- Elected county wide to a four year term
- Has veto power subject to a two-thirds override
- Appointments are subject to confirmation by the legislature

# Strong County President



# Weak County President



# County Manager Form

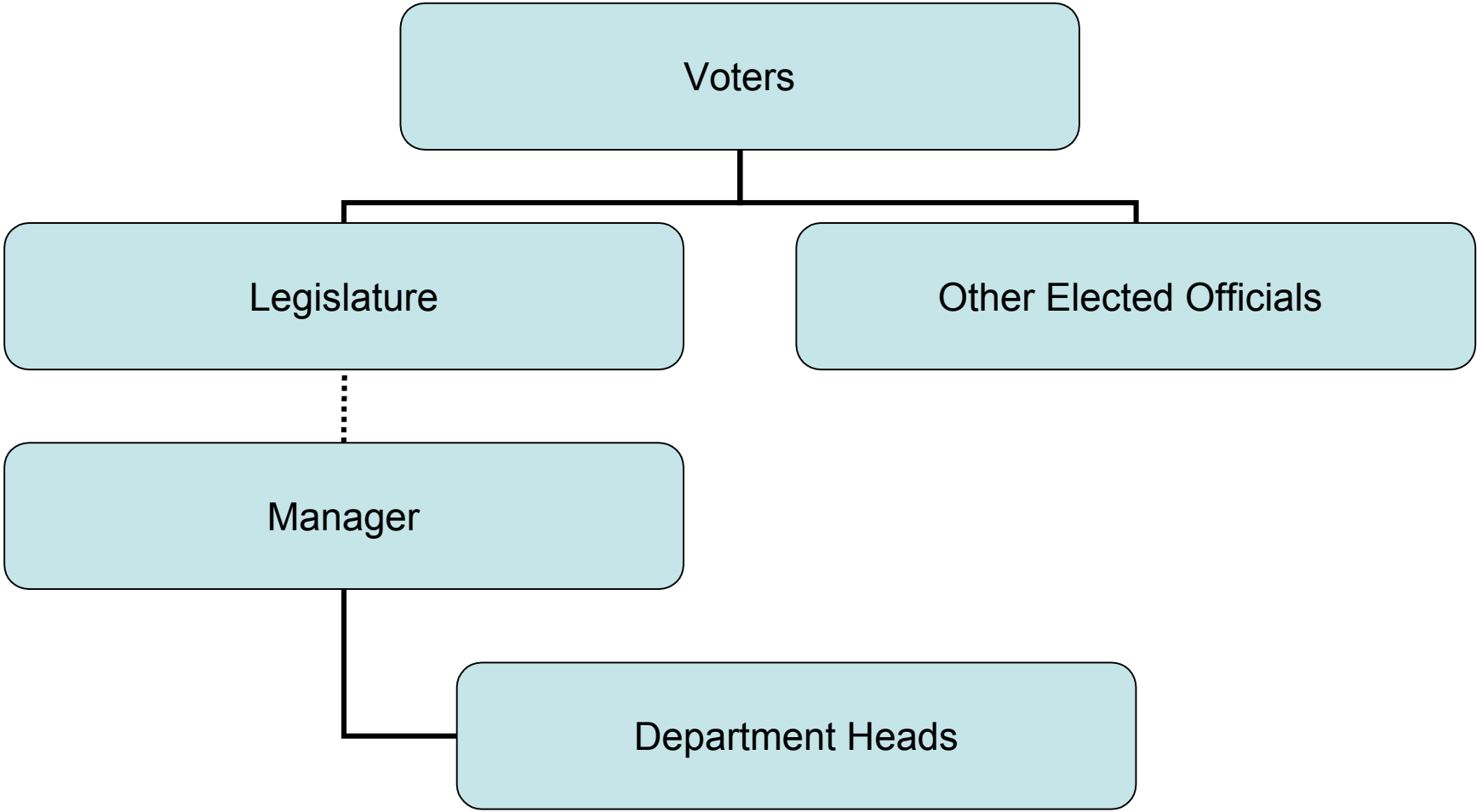
## Strong

- Appointed by the legislature for a four year term
- Appointments not subject to confirmation
- May only be removed for cause, subject to court review

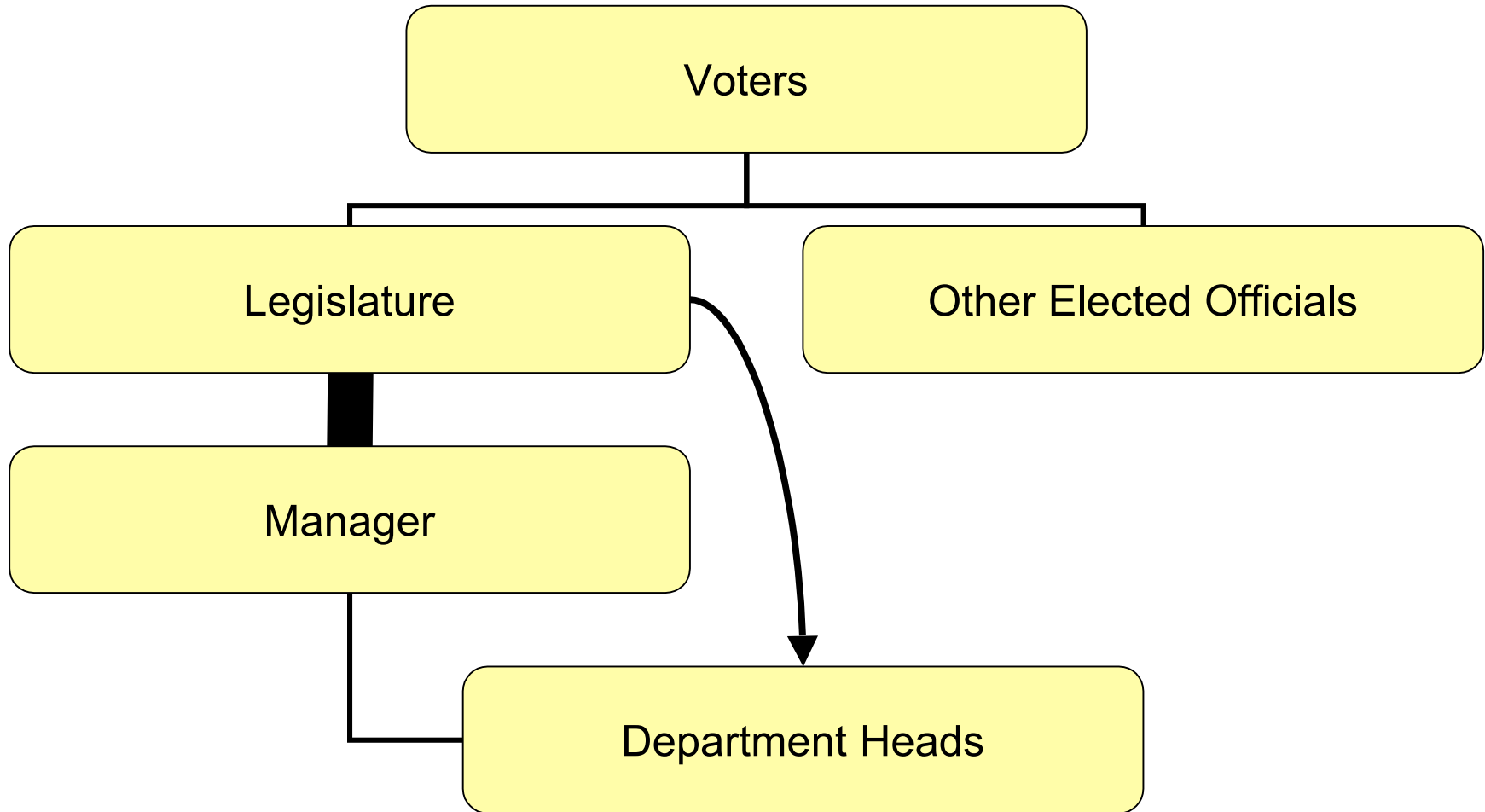
## Weak

- Appointed by the legislature and serves at its pleasure
- Appointments must be confirmed
- May be removed for any reason

# Strong County Manager



# Weak Manager



# Other Forms

- **County Administrator**
  - Appointed by legislature to serve a term equal to theirs
  - Legislature appoints a county auditor and the administrator appoints a county purchasing agent
  - Designed for smaller counties
- **Selective Form**
  - Legislature establishes departments to assist in administration of county functions

